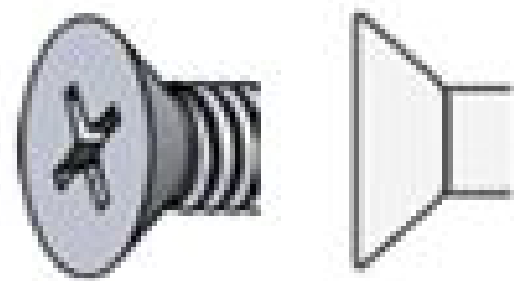
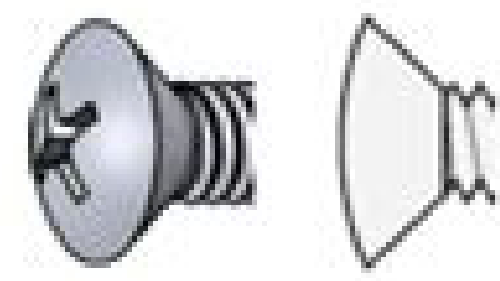


Bolt and screw head styles



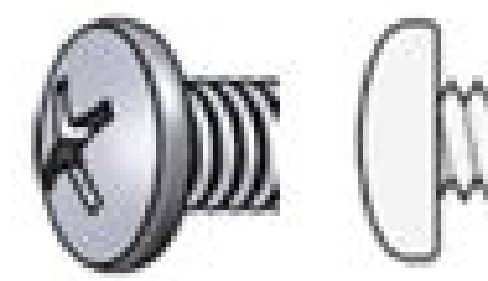
Flat

A countersunk head with a flat top.
Abbreviated FH



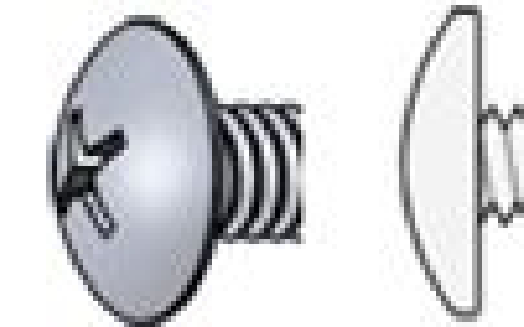
Oval

A countersunk head with a rounded top.
Abbreviated OH or OV



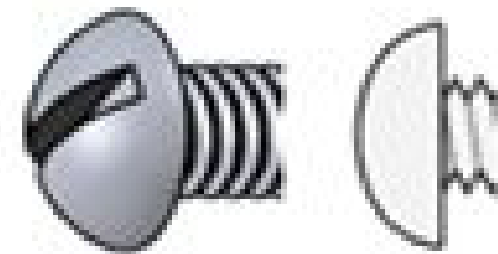
Pan

A slightly rounded head with short vertical sides.
Abbreviated PN



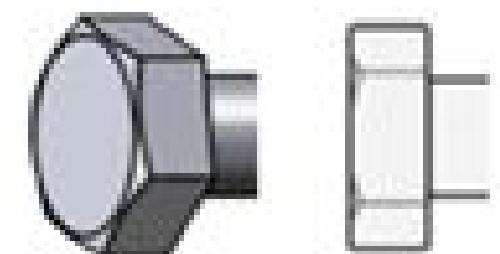
Truss

An extra wide head with a rounded top.



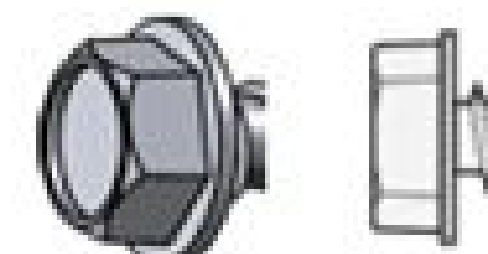
Round

A domed head.
Abbreviated RH



Hex

A hexagonal head
Abbreviated HH or HX



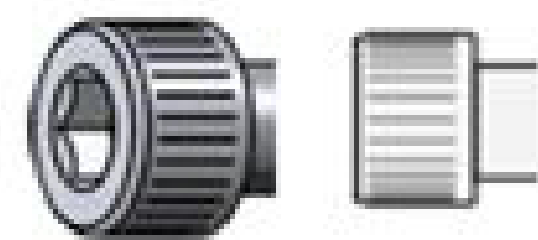
Hex Washer

A hex head with built in washer.



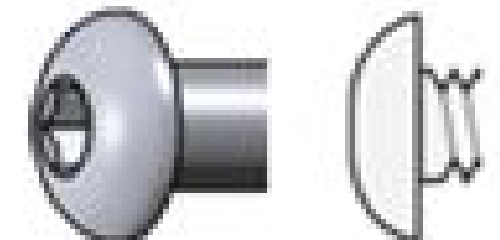
Slotted Hex Washer

A hex head with built in washer and a slot.



Socket Cap

A small cylindrical head using a socket drive.



Button

A low-profile rounded head using a socket drive.